

Online

সচিবের দপ্তর	
পরিকল্পনা বিভাগ, পরিকল্পনা মন্ত্রণালয়	
প্রকল্প, কার্যক্রম/শিল্প ও শক্তি/আর্থ-সামাঃ/ ভৌত অবঃ/সাধাঃ অর্থনীতি/কৃষি বিভাগ	
অতিঃসচিব-১/সচিব-২/অতিঃসচিব-৩	
যুগ্ম-সচিব (প্রশাঃ/পিটি/সমন্বয়/বাজেট/আইটি)	
যুগ্ম-প্রধান (একনেক)/যুগ্ম-সচিব (এনইসি)/পি.এস.	
জায়েরী নং-৬০২	বাকরঃ
তারিখ-	

নং-০৯.০০.০০০০.০৩২.৯৯.০০১.১৭-৫৪

গণপ্রজাতন্ত্রী বাংলাদেশ সরকার
অর্থ মন্ত্রণালয়
অর্থনৈতিক সম্পর্ক বিভাগ
জাপান-১ শাখা
শেরে বাংলা নগর, ঢাকা।
www.erd.gov.bd

অতিঃ সচিব-১ এর দপ্তর	
নং-৬০৭	তারিখ-৪/১২/১৮
যুগ্ম-সচিব (বাজেট ও আইটি)	
যুগ্ম-সচিব (এনইসি ও সমন্বয়)	
যুগ্ম-প্রধান (একনেক)	
যুগ্ম-সচিব (প্রশাসন)	
উপসচিব (প্রশাসন-১)	
যুগ্ম-সচিব (পিটি)	
যুগ্ম-সচিব (সমন্বয়)	
উপসচিব (সাধারণ ১ / ২)	
পি. তারিখঃ ২৭ ফেব্রুয়ারি ২০১৮।	

বিষয়: জাপানে Masters Degree Program in Macroeconomic Policy in GRIPS সংক্রান্ত।

সূত্র: জাপানে অবস্থিত বাংলাদেশ দূতাবাসের স্মারক নং-১৯.০১.৮১০১.০০৬.২৫.০০২.১৭-৭৯৫; তারিখ: ০২ ফেব্রুয়ারি ২০১৮।

উপর্যুক্ত বিষয়ে সূত্রের পত্রের মাধ্যমে জাপানে অবস্থিত বাংলাদেশ দূতাবাস থেকে জানানো হয়েছে যে, জাপানের National Graduate Institute for Policy Studies (GRIPS)-এ Macro Economic Policy Program (MEP)-এর আওতায় মাস্টার্স কোর্সে অধ্যয়নের জন্য আবেদনপত্র আহবান করা হয়েছে। Macro Economic Policy সংশ্লিষ্ট সরকারি কর্মকর্তাগণ উক্ত প্রোগ্রামে অংশগ্রহণ করতে পারবেন। এ সংক্রান্ত ওয়েবসাইট:

http://www.grips.ac.jp/en/education/inter_programs/transition/ (GRIPS MEP)

<http://www.imf.org/external/oap/intro.htm> (JISPA)

২। এ বিষয়ে প্রয়োজনীয় ব্যবস্থা গ্রহণের জন্য নির্দেশক্রমে অনুরোধ জানানো হলো।

Kyrrum
২৭/২/২০১৮

(খাদিজা পারভীন)

সিনিয়র সহকারী প্রধান

ফোন: ৯১১৯৬০২

ই-মেইল: sac-japan1@erd.gov.bd

বিতরণ (জ্যেষ্ঠতার ক্রমানুসারে নয়):

- ১। গভর্নর, বাংলাদেশ ব্যাংক, মতিঝিল, ঢাকা।
- ২। সিনিয়র সচিব, আর্থিক প্রতিষ্ঠান বিভাগ, বাংলাদেশ সচিবালয়, ঢাকা।
- ৩। চেয়ারম্যান, জাতীয় রাজস্ব বোর্ড, সেগুনবাগিচা, ঢাকা।
- ৪। সচিব, অর্থ বিভাগ, বাংলাদেশ সচিবালয়, ঢাকা।
- ৫। সচিব, পরিকল্পনা বিভাগ, শের-ই-বাংলা নগর, ঢাকা।
- ৬। সচিব, পরিসংখ্যান ও তথ্য ব্যবস্থাপনা বিভাগ, ই-২৭/এ, আগারগাঁও, ঢাকা।
- ৭। সচিব, বাণিজ্য মন্ত্রণালয়, বাংলাদেশ সচিবালয়, ঢাকা।

অনুলিপি:

-ইকনমিক মিনিষ্টার, বাংলাদেশ দূতাবাস, টোকিও, জাপান।

যুগ্মসচিব (প্রশাসন) এর দপ্তর	
ডায়েরী নম্বর.....	তারিখ.....
যুগ্মসচিব (পিটি)	
যুগ্মসচিব (সমন্বয়)	
উপ-সচিব (একনেক/সমন্বয়)	
উপ-সচিব (প্রশাসন-১)	
উপ-সচিব (প্রশাসন-৩)	
উপ-সচিব (প্রশাসন-৪)	
উপ-সচিব (প্রশাসন-৫)	
উপ-সচিব (প্রশাসন-৬)	
উপ-সচিব (প্রশাসন-৭)	
উপ-সচিব (প্রশাসন-৮)	
উপ-সচিব (প্রশাসন-৯)	
উপ-সচিব (প্রশাসন-১০)	
উপ-সচিব (প্রশাসন-১১)	
উপ-সচিব (প্রশাসন-১২)	
উপ-সচিব (প্রশাসন-১৩)	
উপ-সচিব (প্রশাসন-১৪)	
উপ-সচিব (প্রশাসন-১৫)	
উপ-সচিব (প্রশাসন-১৬)	
উপ-সচিব (প্রশাসন-১৭)	
উপ-সচিব (প্রশাসন-১৮)	
উপ-সচিব (প্রশাসন-১৯)	
উপ-সচিব (প্রশাসন-২০)	

সিনিয়র সিস্টেম এনালিস্ট এর দপ্তর	
পরিকল্পনা বিভাগ	
ডায়েরী নং.....	তারিখ.....
সিনিয়র প্রোগ্রামার আইসিটি সেল	
প্রোগ্রামার	
মেইলসেবার্ট ইঞ্জিনিয়ার	
সহকারী প্রোগ্রামার ১	

KTC cell



Handwritten signature and date: 22/2/18

Embassy of the People's Republic of Bangladesh

3-29, Kioicho
Chiyoda-ku, Tokyo 102-0094
Tel: (03)- 3234 5801
Fax: (03)- 3234 5802

No. 19.01.8101.006.25.002.17-795

Date: 02 February 2018

Subject: **Master's Degree Program in Macroeconomic Policy in GRIPS.**

The undersigned has the honor to enclose herewith a letter from Mr. Junichi Fujimoto, Ph.D, Director, Macroeconomic Policy Program, National Graduate Institute for Policy Studies (GRIPS).

02. It states that Macroeconomic Policy Program (MEP) is a master's program mainly targeted to mid-career government officials in Asian countries who are engaged in macroeconomic policy making. Over the years, the MEP has successfully provided rigorous economics training to brilliant government officials in the Central Bank, Ministry of Finance, Ministry of Economy and other government agencies in various Asian countries. Currently, three Bangladeshi students are studying in the program.

03. We, therefore forwarding the brochure of the Macroeconomic Policy Program (MEP) for your kind information and necessary action.

Enclosure: As mentioned above (2 copies).

Secretary
Economic Relations Division
Ministry of Finance
Sher-e-Bangla Nagar
Dhaka-1207.

Handwritten signature and date: 02.02.18

(Dr. Sahida Akter)
Economic Minister

E-mail: econom.in.tokyo@mofa.gov.bd
sahida2013@gmail.com

কৃষা-সচিব (জাপান) মহোদয়ের দপ্তর
তারিখ: ০২/০২/১৮
কর্তৃত্বিক সংসর্গ বিভাগ

ইআরডি সচিবের দপ্তর
উই-১ (জাপান ও আমেরিকা) পরিকল্পনা উপস্থাপন প্রকল্প
উই-২ (বিশ্বব্যাংক) গ্রন্থাগার ব্যবস্থা নিষিদ্ধ
উই-৩ (গণসংসদ ও সমাজসেবা) সরকারি পরিষেবা প্রকল্প নিষিদ্ধ
উই-৪ (ব্রাহ্মণ) বিনিয়োগ সহায়তা প্রকল্প
উই-৫ (এজিট)
উই-৬ (স্বাস্থ্য)
উই-৭ (জিআই)
উই-৮ (এসিআই)
উই-৯ (এসআই)
উই-১০ (জিআইসিআই)
পিএস পিও

Handwritten signature

January 29, 2018

Dr. Sahida Akter
Economic Minister
Embassy of Bangladesh in Tokyo

Dear Dr. Akter,

Happy New Year and warmest greetings as we begin 2018! Please allow me to take this opportunity to bring to your attention the Macroeconomic Policy Program (MEP) at the National Graduate Institute for Policy Studies (GRIPS). GRIPS is an international premier policy school located in Roppongi, the heart of Tokyo, and the MEP is a master's program mainly targeted to mid-career government officials in Asian countries who are engaged in macroeconomic policy making. Most MEP students are the recipients of the Japan-IMF Scholarship Program for Asia (JISPA), of which GRIPS is one of the partnership universities.

Over the years, the MEP has successfully provided rigorous economics training to brilliant government officials in the Central Bank, the Ministry of Finance, the Ministry of Economy, and other government agencies in various Asian countries. Currently, three Bangladeshi students are studying in our program.

We strongly wish to continue to receive applications from talented government officials of Bangladesh. Therefore, I humbly request your kind assistance in conveying the information of the GRIPS MEP to promising mid-career government officials.

I enclose the brand new brochure of the MEP. Further information on our program as well as the JISPA is available at:

http://www.grips.ac.jp/en/education/inter_programs/transition/ (GRIPS MEP)

<https://www.imf.org/external/oap/intro.htm> (JISPA)

Please do not hesitate to contact me or our staffs (grips-jispa@grips.ac.jp) for inquiries.

Yours sincerely,

Junichi Fujimoto
Junichi Fujimoto, Ph.D.

Associate Professor

Director, Macroeconomic Policy Program

National Graduate Institute for Policy Studies (GRIPS)

Email: j-fujimoto@grips.ac.jp



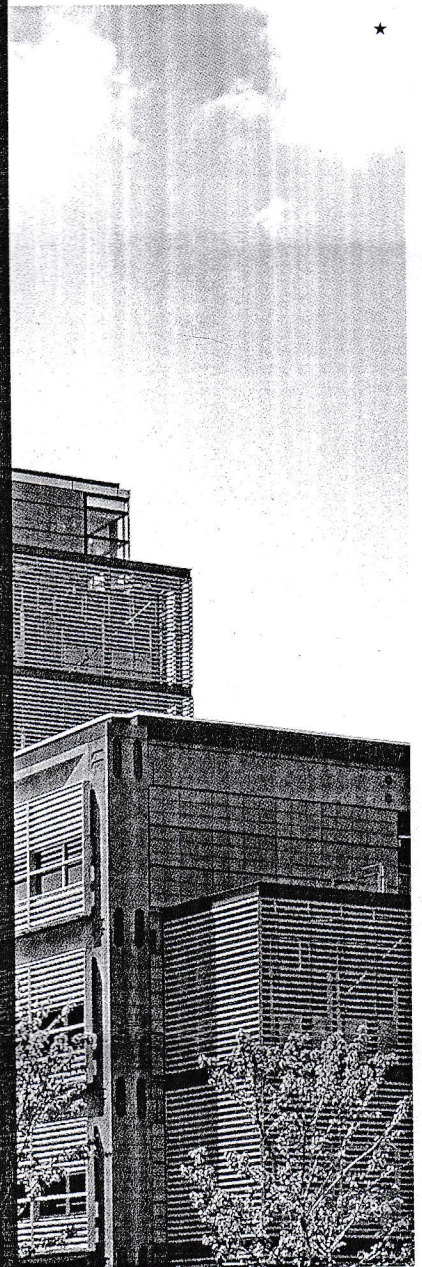
政策研究大学院大学
NATIONAL GRADUATE INSTITUTE
FOR POLICY STUDIES

Gateway to
Global Leadership

2018~

Japan-IMF Scholarship Program for Asia
Self-Financed Students

Macroeconomic Policy Program



政策研究大学院大学
NATIONAL GRADUATE INSTITUTE
FOR POLICY STUDIES

The coursework consists of required courses, **recommended** courses, and elective courses. The required courses, which include **Macroeconomics**, **Microeconomics**, and **Econometrics**, provide solid training in principles and theories of **economics** and develop practical analytical skills for designing and evaluating **macroeconomic policies**. The variety of recommended and elective courses gives students the chance to **further** advance their analytical and quantitative skills as well as to develop their specialization in **specific** areas of interests, such as monetary policy, fiscal policy, international trade, and **financial** markets.

The writing of policy papers (One year Program) / **theses** (Two year Program) will be closely supervised by experienced core faculty members **through** seminar courses.



Junichi Fujimoto

Prof. Junichi Fujimoto

Director, Macroeconomic Policy Program

Specialty: Macroeconomics



Prof. Minchung Hsu

Associate Director, Macroeconomic Policy Program

*Specialty: Macroeconomics, Health Insurance,
Social Insurance, Demographic Changes and Growth,
Public Policy, Economic Dynamics*



2 Curriculum

The curriculum consists of four components: required courses, a policy paper (One year Program)/thesis (Two year Program), recommended courses, and elective courses. Both the policy paper and thesis writing will be closely supervised by experienced core faculty members through seminar courses.

Two year Program (As of 2017)

Category	Course Name
I Required Courses	Introduction to Public Policy Studies
	Microeconomics I
	Macroeconomics I
	Microeconomics II
	Macroeconomics II
	Introduction to Applied Econometrics
	International Finance
	Thesis Seminar I
	Thesis Seminar II
	Thesis Seminar III
	Thesis Seminar IV
	Monetary Economics (Money and Banking)
	Government and Market
	Applied Time Series Analysis for Macroeconomics
	Introduction to Policy Evaluation
	Practical Policy Evaluation
	Strategy for Economic Development
Trade and Industrial Development	
Game Theory	
Mathematics for Economic Analysis	
Public Finance	
Fiscal Reform in Japan	
Economics of Tax Policy	
Public Economics	
Reform of Economic Policy in Japan	
Labor Economics	
Economics of Education and Labor	
Economics of Law	
Competition and Regulatory Economics	
International Trade	
Global Economy, Monetary Policy and Central Banking	
Environmental Economics	
Resource and Energy Economics	
Contemporary Japanese Economy	
Japanese Economy	
Japanese Financial System	
Financial Economics	
Empirical Finance	
Cost Benefit Analysis I	
Cost Benefit Analysis II	
Development Economics	
Asian Financial Markets	
Politics of Global Money and Finance	
Accounting and Financial Management I	
Accounting and Financial Management II	
Fiscal and Monetary Policies in Japan	
Structural Reform and Privatization	
Modernization of Financial Sector	
Public Expenditure Management	
International Development Policy	
GRIPS Forum	
Introduction to Quantitative Methods	
Statistics	
Quantitative Social Systems Analysis	
East Asian Economies	
*Selected Topics in Policy Studies I - IV	
Advanced Microeconomics I	
Advanced Microeconomics II	
Advanced Microeconomics III	
Advanced Microeconomics IV	
Advanced Macroeconomics I	
Advanced Macroeconomics II	
Advanced Macroeconomics III	
Advanced Macroeconomics IV	
Advanced Econometrics I	
Advanced Econometrics II	
Advanced Econometrics III	
Advanced Econometrics IV	
Courses not listed in this table	
X Others	**Courses offered by the Center for Professional Communication

One year Program (As of 2017)

Category	Course Name
I Required Courses	Introduction to Public Policy Studies
	Microeconomics I
	Macroeconomics I
	Microeconomics II
	Macroeconomics II
	Introduction to Applied Econometrics
	International Finance
	Policy Paper Seminar I
	Policy Paper Seminar II
	Monetary Economics (Money and Banking)
	Government and Market
	Applied Time Series Analysis for Macroeconomics
	Introduction to Policy Evaluation
	Practical Policy Evaluation
	Strategy for Economic Development
	Trade and Industrial Development
	Game Theory
Mathematics for Economic Analysis	
Public Finance	
Fiscal Reform in Japan	
Economics of Tax Policy	
Public Economics	
Reform of Economic Policy in Japan	
Labor Economics	
Economics of Education and Labor	
Economics of Law	
Competition and Regulatory Economics	
International Trade	
Global Economy, Monetary Policy and Central Banking	
Environmental Economics	
Resource and Energy Economics	
Contemporary Japanese Economy	
Japanese Economy	
Japanese Financial System	
Financial Economics	
Empirical Finance	
Cost Benefit Analysis I	
Cost Benefit Analysis II	
Development Economics	
Asian Financial Markets	
Politics of Global Money and Finance	
Accounting and Financial Management I	
Accounting and Financial Management II	
Fiscal and Monetary Policies in Japan	
Structural Reform and Privatization	
Modernization of Financial Sector	
Public Expenditure Management	
International Development Policy	
GRIPS Forum	
Statistics	
Quantitative Social Systems Analysis	
East Asian Economies	
*Selected Topics in Policy Studies I - IV	
Advanced Microeconomics I	
Advanced Microeconomics II	
Advanced Microeconomics III	
Advanced Microeconomics IV	
Advanced Macroeconomics I	
Advanced Macroeconomics II	
Advanced Macroeconomics III	
Advanced Macroeconomics IV	
Advanced Econometrics I	
Advanced Econometrics II	
Advanced Econometrics III	
Advanced Econometrics IV	
Courses not listed in this table	
X Others	**Courses offered by the Center for Professional Communication

III
Elective Courses

For qualified students only

Two year Program Degree Offered
Master of Arts in Public Economics
Graduation Requirements
Students must complete a minimum of 44 credits

One year Program Degree Offered
Master of Public Policy / Master of Public Economics
Graduation Requirements
Students must complete a minimum of 34 credits

Required Courses

All students must take the following courses: **Macroeconomics I and II**, **Microeconomics I and II**, **International Finance**, **Introduction to Applied Econometrics**, and **Introduction to Public Policy Studies**. These required courses provide solid **training** in principles and theories of economics and develop practical analytical skills for **designing and evaluating** macroeconomic policies.

Recommended Courses

The recommended courses include quantitative analysis courses such as **Applied Time Series Analysis for Macroeconomics**, **Introduction to Policy Evaluation**, **Mathematics for Economic Analysis**, **Statistics**, **Quantitative Social Systems Analysis**, and **Cost Benefit Analysis I and II**. Students may also choose from courses covering a variety of disciplines such as **Accounting and Financial Management**, **Empirical Finance**, **Monetary Economics**, **International Trade**, **Public Expenditure Management**, **Development Economics**, **Labor Economics**, **Game Theory**, and **Japanese Economy**.



Advanced Courses in Economics

Students with exceptional performance enjoy an opportunity to take advanced courses offered to Ph.D. candidates in the Policy Analysis Program. These include **Advanced Microeconomics**, **Advanced Macroeconomics**, and **Advanced Econometrics**.

GRIPS Forum and GRIPS Seminar Series in Economics

The bi-weekly GRIPS Forum provides an excellent opportunity for students to understand major economic and political issues in Japan and the world. Weekly economic seminars are provided by researchers explaining their latest findings.

Recent GRIPS Forum Speakers	Position	Lecture
Dr. György Matolcsy	Governor of The Central Bank of Hungary	Growth Friendly Fiscal Consolidation and the Role of Monetary Policy in Hungary
H.E. Mr. Thuraiin Thant Zin	Ambassador Extraordinary and Plenipotentiary of the Republic of the Union of Myanmar to Japan	Myanmar's Political Development (2010 -2016)
Mr. Masakazu Toyoda	Chairman and CEO, The Institute of Energy Economics; Adjunct Professor of GRIPS	Unpredictable Global Energy Situation: Grand Transformation Time Requires Great Cooperation
Dr. Naoyuki Yōshino	Dean of the Asian Development Bank Institute, Professor Emeritus of Keio University, Adjunct Professor of GRIPS	Economic Effect of Infrastructure Investment and Exchange Rate Mechanism of Asia
Mr. Masao Uchibori	Governor of Fukushima Prefecture	Future of Fukushima
Mr. Takehiko Nakao	President, Asia Development Bank	Asian Economic Outlook and Roles of ADB

3 Alumni

One of the greatest resources and joys of studying at GRIPS is the diversity of the student community. The connections you make at GRIPS are a valuable part of your degree. The GRIPS Alumni Network will ensure they are lifetime bonds by keeping you in touch with fellow alumni and the school. As a GRIPS graduate, you will join an impressive network of around 4,000 alumni who are actively shaping policies in more than 100 countries around the world. We offer a variety of ways to remain engaged with GRIPS and strengthen your ties with fellow alumni around the globe. These include alumni reunions, seminars, a searchable alumni directory and online networking opportunities utilizing social media such as Facebook and LinkedIn.

Voices of the Alumni



Binh Nguyen Dang (Vietnam, '05)

Current Position: Director General, Secretary to the Chief of The Office
Affiliation: Office of the Party Central Committee

Studying at GRIPS was a wonderful time for me. I got a lot of valuable knowledge and lessons from it and also have had an interesting and useful experience to apply all this to my present life and work. The lecturers and staff at GRIPS were very kind, enthusiastic and helpful to us. GRIPS is also an ideal place to meet and become friends with people from many countries in the world. I am grateful to GRIPS and IMF for giving me a solid foundation to readily and self-confidently overcome new challenges in my work and to have a more beautiful and meaningful life.



Oleg Smolyakov (Kazakhstan '05)

Current Position: Deputy Governor
Affiliation: National Bank of Kazakhstan

After four years in the National Bank of Kazakhstan I felt that to become more proficient and competitive there was a need to pursue further graduate studies in a recognized, balanced master's program of high standards. GRIPS allowed me to match my personal ambitions with program sophistication. This multifaceted program at GRIPS, with its outstanding lecturers, provides an excellent experience and is a great starting point for those aiming to become leaders in public policy making.



Pradip Bhowmick (India '11)

Current Position: Assistant General Manager - HRD
Affiliation: Securities and Exchange Board of India

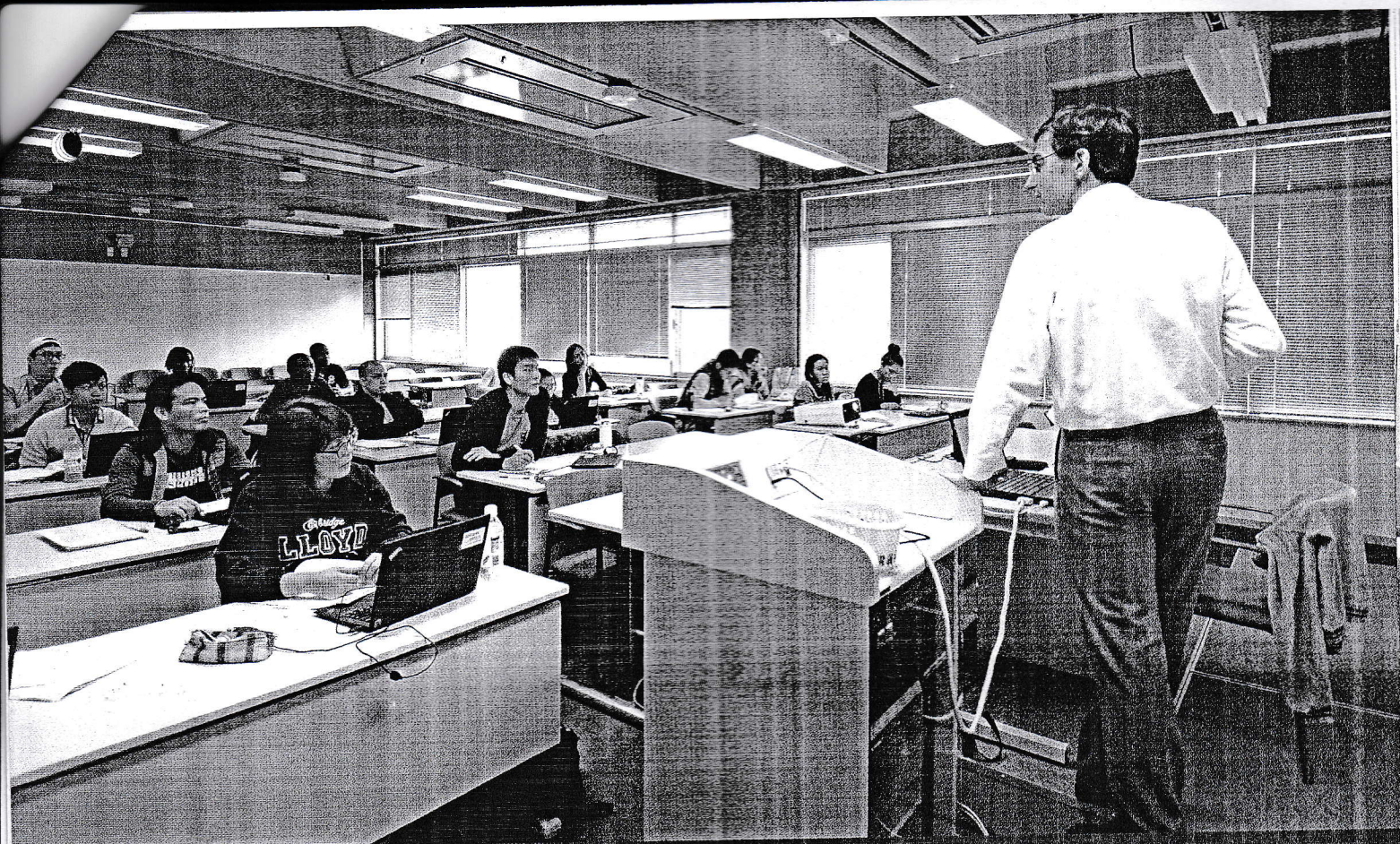
My study at GRIPS and for that matter in Japan has been a great learning experience. Apart from the in class studies, the close interaction with students from across the globe has helped me to have a much broader view about the global issues as well as issues being faced by individual countries. With a student body from more than 50 countries across the globe, GRIPS is truly a global gateway. Moreover, a lot can also be learned from the rich culture and customs of the Japanese society.



Oranee Thanakitleelacharoen (Thailand '08)

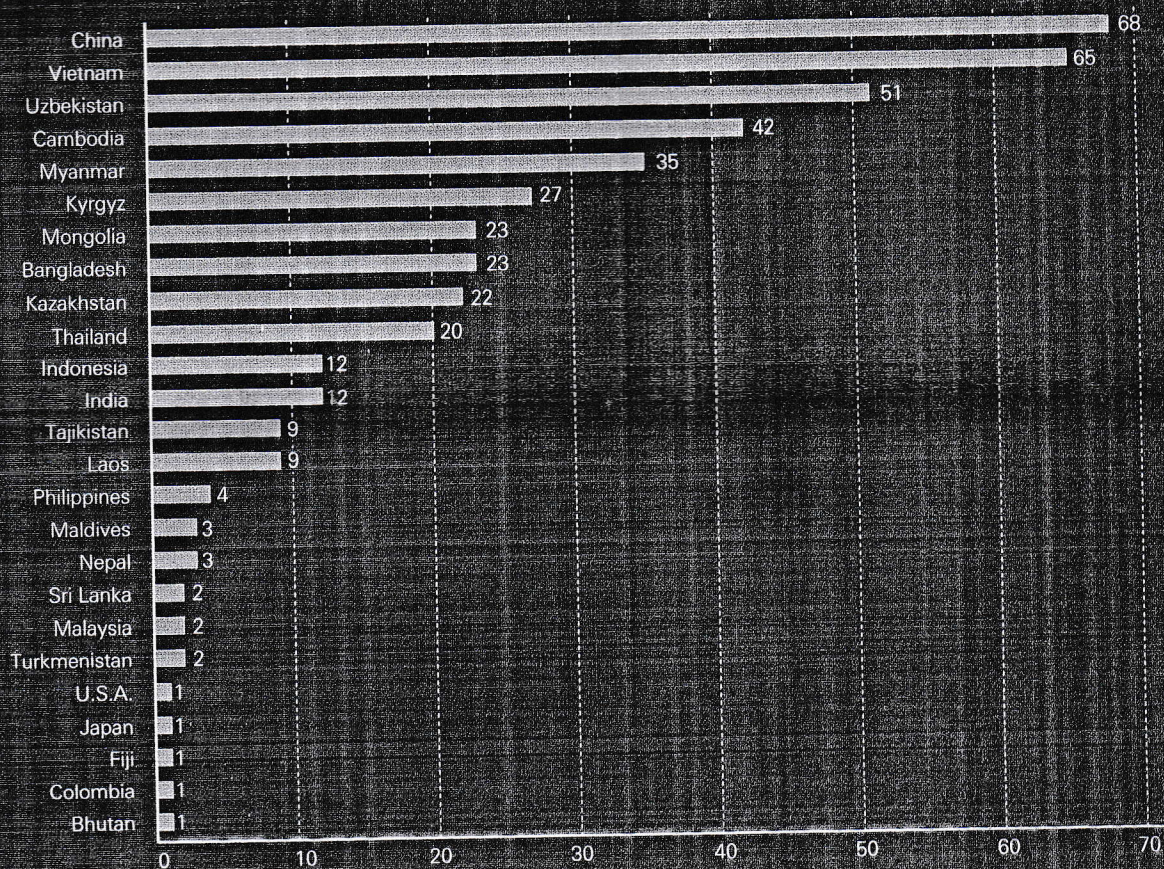
Current Position: Senior Examiner - ICAAP Examination Development Division, Risk Management and Information System Examination Department, Supervision Group
Affiliation: The Bank of Thailand

I spent one year at GRIPS and soon realized that I made the right decision to study here. GRIPS provides excellent education, nice accommodation, friendly staff and good facilities for students. You will not only gain advanced academic knowledge and valuable experiences from well-known and good academic background professors at GRIPS, but you will also be able to build firm friendships with scholars from around the world which could last a lifetime. And you will be able to fully experience life in Japan and its rich culture through the many activities organized by GRIPS. Most importantly, you will be encouraged to be a dedicated researcher and learn to apply your knowledge to your current career in the most efficient way. That's why I recommend you to choose GRIPS!



The Number of Graduates (As of 2017)

Macroeconomic Policy Program
(including Transition Economy Program and Asian Economic Program)

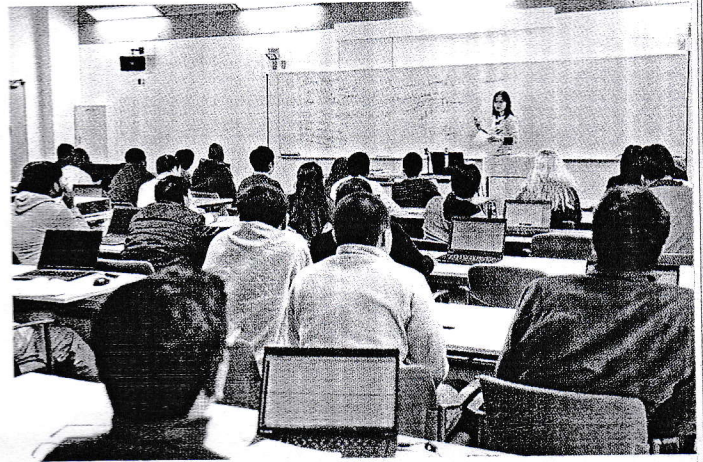


Qualifications

Candidates must hold a Bachelor's degree from a recognized/accredited university and must satisfy the English language requirements with a minimum TOEFL score of 550 (iBT 79-80) or IELTS 6.0. A strong undergraduate background and/or evidence of experiences with public policy issues in economic management are also required.

Under current program guidelines, candidates must be a national of one of the following countries: Bangladesh, Bhutan, Cambodia, China, India, Indonesia, Kazakhstan, Kyrgyz Republic, Lao P.D.R., Malaysia, Maldives, Mongolia, Myanmar, Nepal, Pacific Island Countries, Papua New Guinea, Philippines, Sri Lanka, Tajikistan, Thailand, Timor-Leste, Turkmenistan, Uzbekistan, or Vietnam.

Candidates should also currently be employed by one of the following or related government agencies: central bank, ministry of economy, ministry of finance, ministry of planning/development, ministry of trade/commerce, tax administration, national statistics bureau, or financial regulatory agencies. The program will also consider officials working in other areas of government that have a significant impact on the formulation or implementation of macroeconomic policy.



5 May	6 June	7 July	8 August	9 September	10 October
Finalizing the admissions process and pre-departure preparation (Visa application, accommodation, etc.)		IMF Orientation Program Starts in July or August, depending on current TOEFL score.			Start the program

6 June	7 July	8 August	9 September	10 October
Screening and result notification	Finalizing the admissions process and pre-departure preparation (Visa application, accommodation, etc.)		Arrival in Japan and start of the program	

5 About GRIPS

GRIPS is a graduate school specializing in education and research for policy studies. It is located in Roppongi, one of the trendiest cultural and international districts in the heart of Tokyo. Established in 1997 by the Japanese government, GRIPS aims to produce first-class policy makers and conduct cutting-edge research in policy studies. Our slogan is, "Gateway to Global Leadership." Economics, Political Science, International Relations, Public Administration, Operations Research and Social Engineering comprise the major academic disciplines of the university.

The predecessor of GRIPS was the Graduate School of Policy Sciences established in 1977 at Saitama University. It was the first graduate school for policy studies in Japan.

GRIPS is one of the most open and internationalized graduate schools in Japan. There are more than 260 foreign students from 63 countries currently studying at GRIPS. International students comprise 66% of the student population. Most GRIPS students are professionals from central and local governments. The working and teaching language for the Macroeconomic Policy Program is English.

GRIPS has been a partner of the Japan-IMF Scholarship Program for Asia (JISPA) since the program's beginnings in 1993. In addition GRIPS has been entrusted by the Japanese government and international organizations such as the World Bank, World Customs Organization, and Asian Development Bank to train mid-career bureaucrats from emerging and developing countries.

Faculty

The MEP is supported by full-time faculty and visiting lecturers. About 20 full-time faculty members serve as the core faculty of the program. The core faculty includes not only Japanese professors, but also international scholars. Faculty at GRIPS include both members with solid academic training and outstanding publication records, as well as practitioners with extensive experience in civil service and public policy management. All are committed to educating a new generation of policy makers and have rich experience in teaching and thesis supervision. The expertise of GRIPS faculty in economics has been recognized globally. According to the economic institution rankings in RePEc, GRIPS ranks second in Japan (as of September 2017).

For more on our faculty members, please see <http://www.grips.ac.jp/en/about/directory/>



GRIPS at a glance

The educational mandate of GRIPS is to cultivate high-level policy professionals and researchers. Our degree programs are designed to train students to envision a wide range of solutions to various policy issues.

OUR MISSION	<ul style="list-style-type: none">• Cultivate future leaders in policymaking• Serve as an international center for policy research
STUDENT LIFE	<ul style="list-style-type: none">• Numerous scholarships available• Spacious campus located in the heart of Tokyo (Roppongi)• Modern and comfortable dormitories• Global community and network (from over 80 countries)• Field trips and various cultural programs offered
ACADEMIC	<ul style="list-style-type: none">• 1- and 2-year master's programs (13 programs)• Integrated 5-year doctorate program (2 programs)• Various doctorate programs (7 programs)• Distinguished faculty• Classes taught fully in English
FUTURE CAREERS	<ul style="list-style-type: none">• Policy-making career tracks (government official, private sector, international organizations, academia, etc.)• Active alumni for international networking

Programs offered at GRIPS for international students

For details, visit: http://www.grips.ac.jp/en/education/inter_programs/

Brief History of GRIPS

1977 Graduate School of Policy Science (GSPS) established at Saitama University; the predecessor of GRIPS

1997 National Graduate Institute for Policy Studies (GRIPS) established

1999 Relocated to Wakamatsu-cho campus in Tokyo (Shinjuku)

2005 Relocated to current campus in Roppongi

6

Student Support and Resources

One unique aspect of GRIPS is our extensive support system for assisting students in their daily living. We consider this aspect of your lives to be every bit as important as your academic life, especially for foreign scholars unfamiliar with Japan. As international students have comprised, on average, about 60% of the GRIPS student body over the last 10 years, we have developed comprehensive services to assist students in their day-to-day living.

The Student Office organizes orientation programs for incoming students and assists arriving international students in getting organized and settled in Japan. It also organizes a number of social events and activities, including field trips and Japanese cultural experiences. The Student Office also functions as a hub to promote meaningful interaction and understanding between Japanese and foreign nationals.

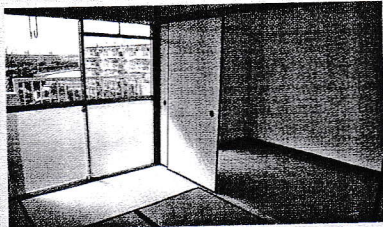
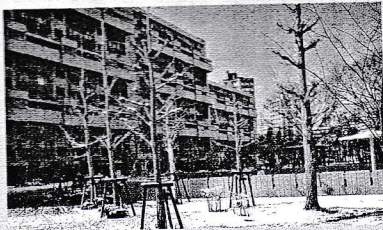
Accommodation

Accommodation is provided in the Tokyo International Exchange Center (TIEC), operated by the Japan Student Services Organization (JASSO), in GRIPS International House, or in private apartments recommended by the GRIPS Student Office.

Misato Housing Complex

In Saitama prefecture, nearby Lalaport shopping mall that boasts around 200 shops and restaurants flanked by enormous IKEA and Costco stores.

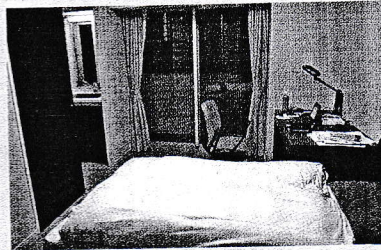
Room Types : 1Room w/kitchen
2Rooms w/kitchen



GRIPS International House I

In Nakano, built in 2009

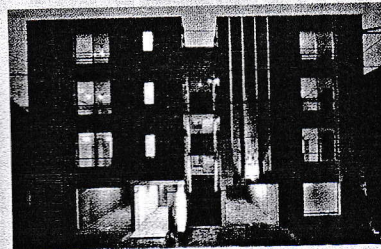
Room Types : Single, Couple



GRIPS International House II

In Nakano, built in 2010

Room Types : Single, Couple



Resources

Center for Professional Communication

The mission of the Center for Professional Communication is to support GRIPS students, faculty, and staff in developing effective professional

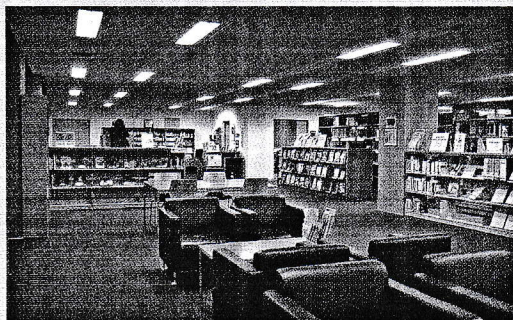


communication skills and competencies needed to communicate productively in an environment of multiple stakeholders. To this end, we offer a range of instruction and support in fundamental areas of professional communication in English and Japanese, including policy paper writing, professional speaking, grant proposal writing, and digital communications. We

also provide opportunities for cultural and academic exchanges through a self-access learning center, organize seminars and special events related to all aspects of professional communication, and prepare customized materials for students and staff on academic and professional writing and language learning.

Library

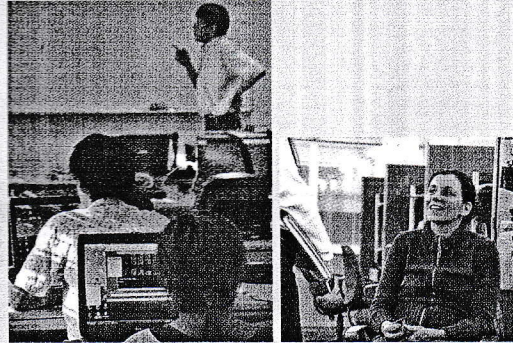
- Extensive collection of publications in the field of policy studies, collected from around the world
- Collection contains over 180,000 volumes, including reference books, statistical collections, working papers, and government documents
- Large collections of periodicals that include more than 12,000 journals, many of which are available online
- Well-trained staff are equipped to respond to research-related requests



Facilities

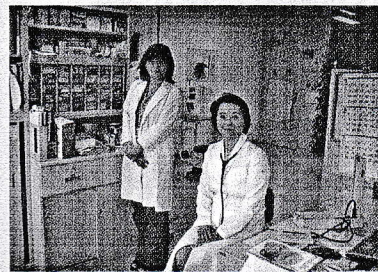
Student Rooms

- Each student is provided with a study space, accessible 24 hours a day
- A computer help desk is open to all students during regular working hours



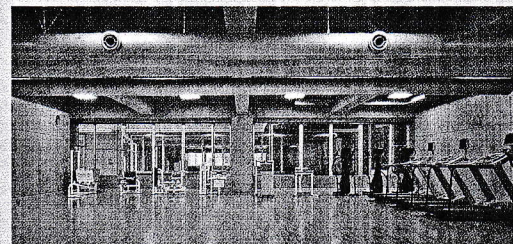
Health Services Center

- In-house health clinic
- Nurse on duty daily, doctor available several days a week
- Provides medical advice, basic medical examinations
- Will refer to an appropriate hospital or specialist when necessary



Fitness Center

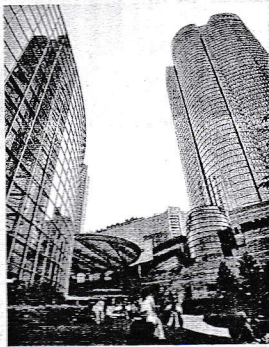
- Running machines
- Training equipments
- Showers
- DVD for exercises
- Free use by students, faculty, and staff



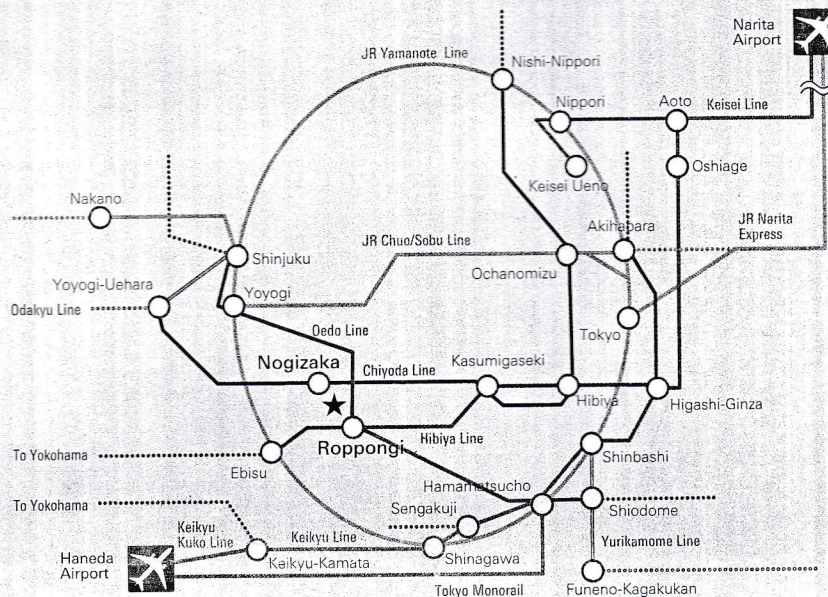
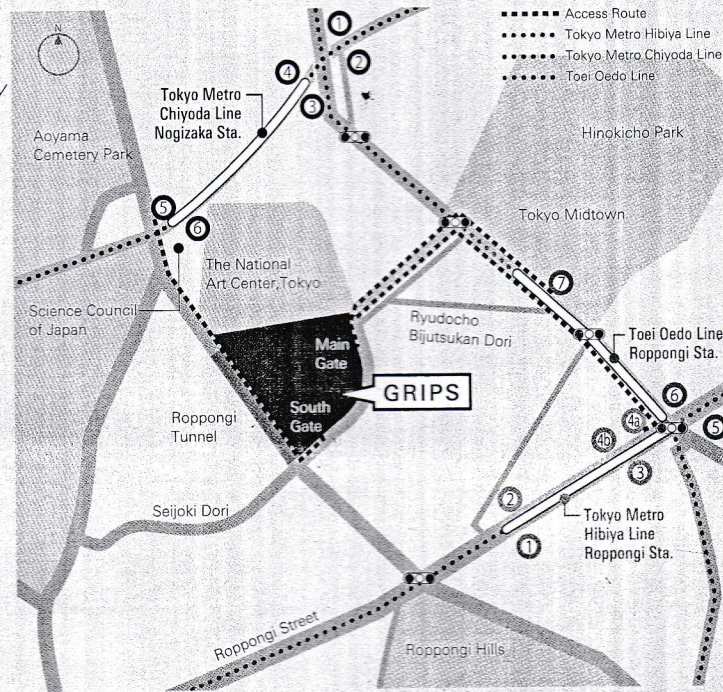
Address and Contact Information

Getting to GRIPS

The GRIPS building is located in the center of Tokyo, conveniently accessible by public transport. Both Nogizaka Station on the Chiyoda Line and Roppongi Station on the Oedo and Hibiya Lines are within 10 minutes walking distance.



Roppongi Hills



National Graduate Institute for Policy Studies

7-22-1 Roppongi, Minato-ku, Tokyo 106-8677 Japan

Tel: +81-(0)3-6439-6000 Fax: +81-(0)3-6439-6010

<http://www.grips.ac.jp>

Admissions Office

Tel: +81-(0)3-6439-6046 Fax: +81-(0)3-6439-6050

admissions@grips.ac.jp

2017.10



Gateway to
Global Leadership